

CHARACTERISTICS/TESTS

In accordance with ANSI C29.9
 Glaze: Light-grey Munsell Notations N°70
 Approximate weight 47.4 lbs

DIMENSIONS

Minimum leakage distance 37 in

MECHANICAL VALUES

Cantilever breaking strength, upright 2000 lbs
 Cantilever breaking strength, underhung 2000 lbs
 Tensile breaking strength 12000 lbs
 Torsional breaking moment 10000 in.lbs
 Compression breaking strength 15000 lbs

ELECTRICAL VALUES

Guaranteed voltage:
 Critical impulse dry, wave 1.2/50 - positive polarity 225 kV
 Power frequency wet, withstand 80 kV
 Impulse dry, wave 1.2/50 - withstand, positive polarity 200 kV

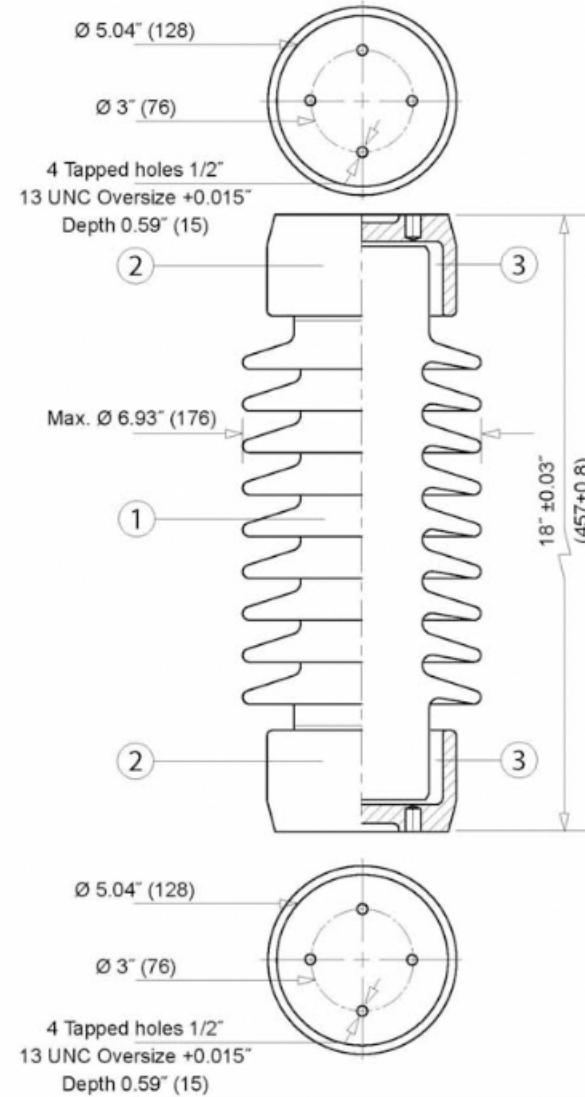
Test voltage 22 kV
 Maxi RIV at 1 MHz 100 μ V

GENERAL TOLERANCE

$\pm (0.04d + 0.06)$ in., if $d \leq 11.8$ in.
 $\pm (0.025d + 0.24)$ in., if $d > 11.8$ in.

CONVERSION TABLE

DIMENSIONS	1.	mm	0.03937	inch
	25.4	mm	1	inch
FORCE	1	N	0.22481	pound
	4.448	N	1	pound
MOMENT OF FORCE	1	Nm	8.8495	inch-pound
	0.113	Nm	1	inch-pound



EGER PRODUCTS, INC.

REVISIONS:

PROPRIETARY AND CONFIDENTIAL
 THE INFORMATION CONTAINED IN THIS DRAWING IS THE SOLE PROPERTY OF EGER PRODUCTS, INC.. ANY REPRODUCTION IN PART OR AS A WHOLE WITHOUT THE WRITTEN PERMISSION OF EGER PRODUCTS INC. IS PROHIBITED.

DATE: 8/1/2014

CUSTOMER:

SCALE: NTS

TR210

DRAWN BY: E. GREEN

DWG. OUTDOOR STATION POST INSULATOR

APPROVED BY:

MATERIAL: